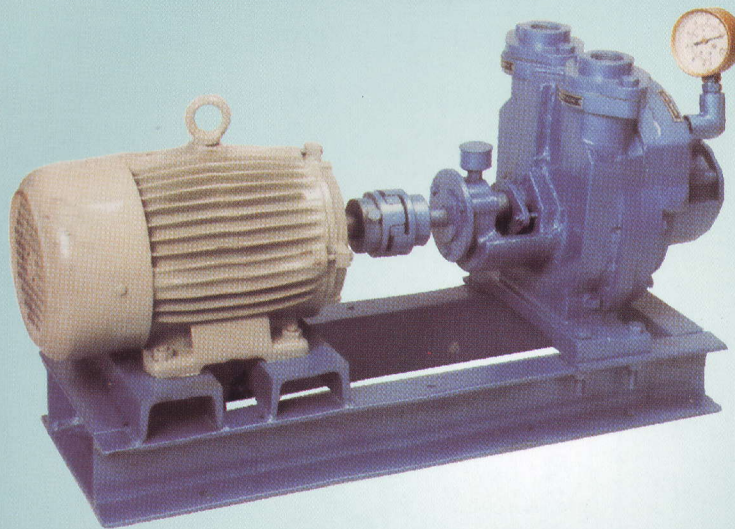


RKI

R. K. INDUSTRIES

WATER-RING VACUUM PUMP



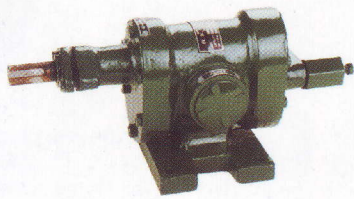
SALIENT FEATURES

- Suitable for continuous service for applications such as evaporation, drying, filtration, distillation, impregnation etc.
- Minimum lubrication and noise free operation.
- Easy to dis-mentalling, need not disturb pipe line at water connection.
- No contamination with process fluid.

DESIGN AND WORKING OF 'RKV' WATER RING VACUUM PUMP

'RKV' water ring vacuum pumps are available in various constructions and designs to suit continuous vacuum application.

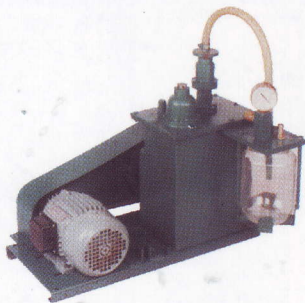
'RKV' water ring vacuum pump consists of a dynamically mounted impeller in a casing, rotates at motor rpm and imparts centrifugal force to water introduced in a casing to form a ring against the main casing wall. Pocket volumes are formed by the hub and the blades of impeller and the liquid surface. The pockets increasing with angular displacement are connected to inner part and those connected with angular displacements are connected to the outlet part. On rotation of the impeller air is drawn through the inlet port and compressed out through the outlet port along with water. The water ring thus acts as sealing as well as cooling agent.



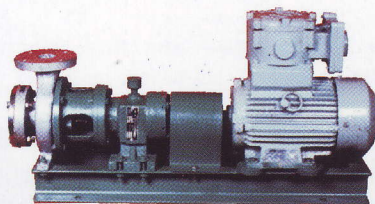
ROTARY GEAR PUMP



VANE PUMP



OIL SEAL HIGH VACUUM PUMP



CENTRIFUGAL CHEMICAL PUMP

STANDARD SPECIFICATION FOR RKV WATER VACUUM PUMP

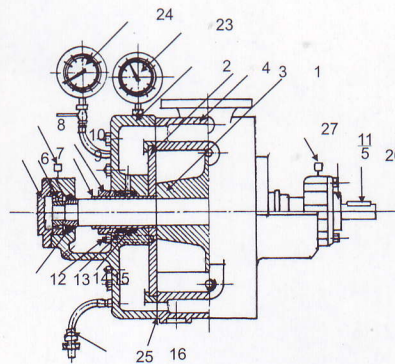
MODEL	SUCTION CAPACITY MH3/HR	MOTOR HP	RPM	WATER CONSUMPTION LTR/MIN.	APROX WEIGHT KGS.
RKV-50	50	3	2900	7	35
RKV-80	90	5	2900	10	40
RKV-120	120	7.5	2900	14	50
RKV-160	160	7.5	1440	15	175
RKV-220	220	10	1440	20	190
RKV-330	330	15	1440	30	210
RKV-440	440	20	1440	40	250

For higher size pump please write to us with detailed requirement.

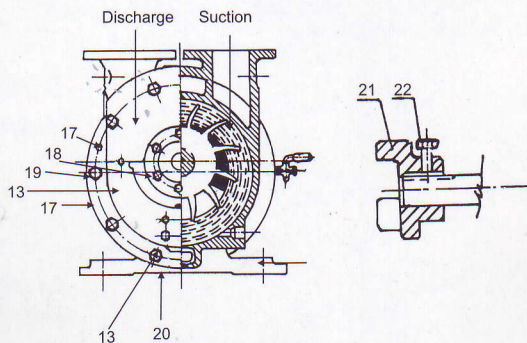
MATERIAL OF CONSTRUCTION

BODY	CI-20	CI-20 WITH SS RING	SS 304	SS 316	CAST STEEL
IMPELLER	CI-20	BRONZE	SS 304	SS 316	CAST STEEL
SHAFT	EN-9	SS 304	SS 304	SS 316	EN-9
CONTROL PLATES	CI-20	BRONZE	SS 304	SS 316	CAST STEEL
BALLS	TEFLON	TEFLON	TEFLON	TEFLON	TEFLON
COVERS	CI-20	CI-20	SS 304	SS 316	CAST STEEL

TYPICAL CROSS SECTION



VIEW FROM DRIVING END



Sr No.	Description	Qty
1.	Casing	1
2.	Casing cover	1
3.	Rotor with shaft	1
4.	Control disk	1
5.	Bearing cover b side	1
6.	Bearing cover a side	1
7.	Roller bearing	1
8.	Distance ring	2
9.	Protecting bush	2
10.	Stuffing box flange	2
11.	Bearing cover felt ring	2
12.	Casing cover felt ring	1
13.	Screws to control disc	10
14.	Stuffing box joint	12
15.	Stuffing box ring	1
16.	Casing cover joint	2
17.	Casing cover bolt	2
18.	Bearing cover bolt	2
19.	Dowel pin	2
20.	Draining screw	1
21.	Coupling half flange	1
22.	Coupling bolt	1
23.	Water pressure gauge	1
24.	Vacuum gauge / pressure gauge	1
25.	Automatic drain value	1
26.	Key	1
27.	Grease cup	2

Works & Off. : B/210, Gokul Industrial Estate, Plot No. 150, Marol Co-op. Indl. Estate Ltd., Mathuradas Vasanji Road, Andheri (E), Mum-59.

Contact Details

Office: 022-2859 7345, 022-6450 0788, 022- 3241 5880 • Workshop : 022-3263 3894 • Telefax : 022-2850 6291 • Cell Phone : 98679 61016